

PONTIAC CAR CLUB QUEENSLAND

TOURING RUN PROFILE No.17

BRISBANE VALLEY 3

This is a full day run of medium distance, oriented from the northern aspect. It caters for members from all regions, with some choosing to drive directly to Toogoolawah from the Ipswich end. Use for any venue at Toogoolawah.

Start Point :

BP, Bruce Highway, Burpengary

Sector distances and times :	km	min
BP Burpengary to Woodford	35	30
Woodford to Kilcoy	25	20
Kilcoy to Toogoolawah	44	35

Route :

Bruce Highway north to turnoff, D'Aguilar Highway to Woodford, stop in Archer Street parallel to Highway from George Street intersection west, continue through Kilcoy to Harlin, turn left and head south to Toogoolawah

Cautions :

Care required at Caboolture to ensure correct route taken to Woodford. Take the Caboolture exit, but stay on right hand side, avoiding the Caboolture and Bribie Island exits to head north. If miss, head north to Pumicestone Road, exit and head across to Caboolture to rejoin D'Aguilar Highway.

Timetable :

BP Burpengary 0930 for 1000
Woodford 1030 to 1105 (morning tea)
Toogoolawah 1200

Food :

Late Breakfast at start point servo

Morning Tea at Woodford

Lunch : (2013) Exchange Hotel at Toogoolawah, 11 Cressbrook Street. Numbers required for pub lunch, book for 12 Noon. Note change of ownership after this, no longer advisable. (2014) Toogoolawah Golf Club, end of Annette Street, has function facility.

<http://www.toogoolawahgolf.com.au/page3.html>

Catering Judie Marschke (07) 5423 1509, 0407 130 596 or tgc4313@gmail.com

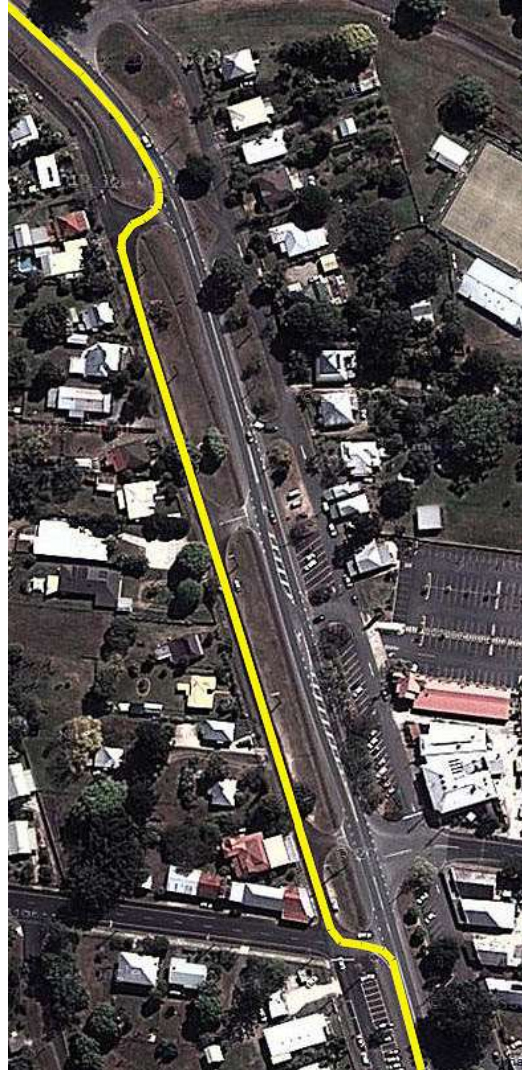
History :

2/6/13 - 2013 Touring Run, 40 cars (21 Pontiacs), 82 people for lunch (Hangi)

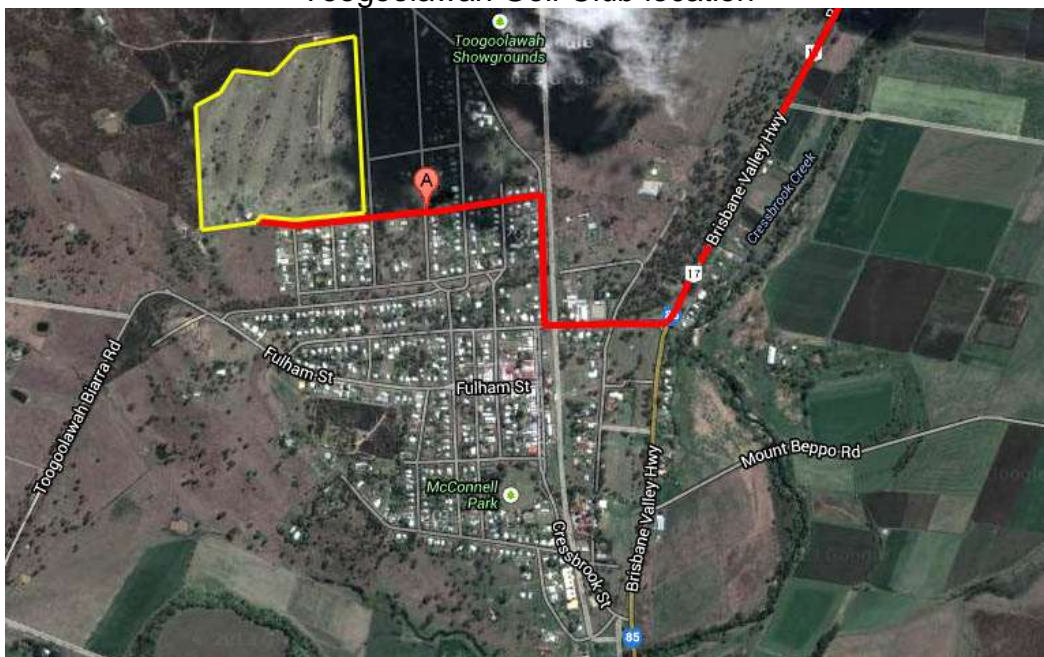
1/6/14 - 2014 Touring Run, 16 cars (13 Pontiacs), 31 people for lunch

Maps :

Woodford 'pitstop' (Archer Street)



Toogoolawah Golf Club location



Photos :



Woodford Archer Street stop



Golf Club carpark



Dining area overlooking course

