

# PONTIAC CAR CLUB QUEENSLAND

## TOURING RUN PROFILE No.20

### MOOBALL & BILLINUDGEL via MULLUMBIMBY and BRUNSWICK HEADS

This is a full day run of medium distance, especially suited to Gold Coast and Northern NSW members.

Start Point : Shell, Pacific Motorway (M1), Mudgeeraba Exit 79

Sector distances and times :	km	min
Shell Mudgeeraba to Murwillumbah	51	40
Murwillumbah to Mooball	19	20
Mooball to Mullumbimby	18	20
Mullumbimby to Billinudgel (via Bruns Hds)	14	20

Route : M1 to Tweed Valley Way, continue to Murwillumbah, straight through roundabout and continue over range to Mooball. Morning Tea stop at Moo Moo Roadhouse (park both sides). Continue south on Tweed Valley Way, crossing over highway at Yelgun. Continue past Billinudgel turnoff and around corner to roundabout. Head right under Highway, then left onto Coolamon Scenic Drive. Follow this to Mullumbimby. This is renamed Murwillumbah Road entering the town. Cross Brunswick River, veer left and follow Tincogan Street to end at Station Street. Turn right, then left over railway at next left, Argyle Street. This continues east and becomes Mullumbimby Road. It finishes at Gulgan Road T junction. Turn left. Continue until big roundabout, take straight ahead to cross over highway, then straight ahead at next roundabout (follow Brunswick Heads signs). This becomes 'Old Pacific Highway'. Follow this north through Brunswick Heads and around to left, through first roundabout, head up hill then turn left at the Bonanza Street exit for Billinudgel / The Pocket. Once under the highway, the road curves to the right (after the first intersection) to reach Wilfred Street. Turn left, then right into the pub carpark just after the railway crossing. To depart head east on Wilfred Street and left onto Highway. Humble Pie is on left just before highway entry.

Cautions : Inform participants to be in the left lane after Banora Point to enable them to exit at the Tweed Valley Way. Daylight Saving Time (first Sunday of October to first Sunday of April) needs to be considered in planning and booking.

Timetable :	with DST (ends start of April, starts early Oct)
Shell Mudgeeraba	0830 for 0900
<b>DST add 1 hour at Border</b>	
Murwillumbah pass	0940
Mooball	1000-1045
Billinudgel	1200

Food :

Breakfast at Shell Mudgeeraba

Morning Tea at Moo Moo Roadhouse (02 6677 0057)

<https://www.facebook.com/pages/Moo-Moo-Roadhouse/574266589305872>

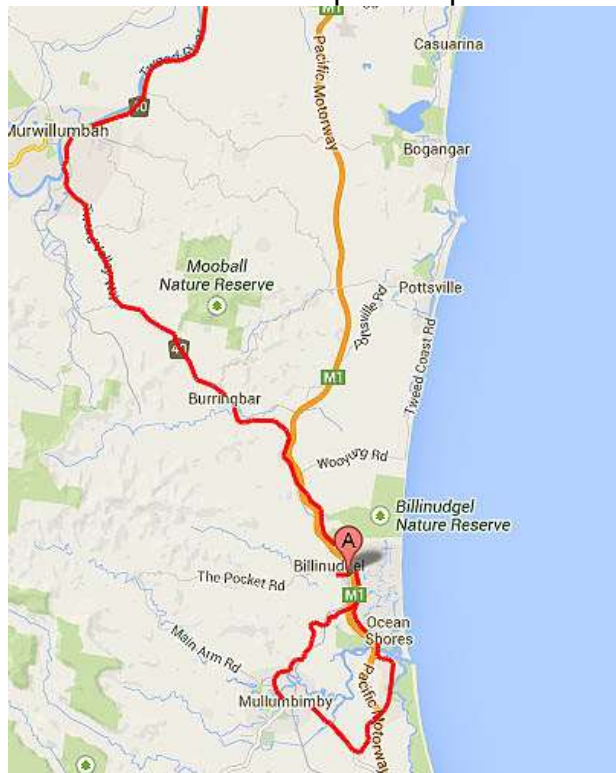
Lunch Billinudgel Hotel (02 6680 1148). Numbers required, book for 12 Noon

<http://www.brunswickvalley.com.au/billihotel/>

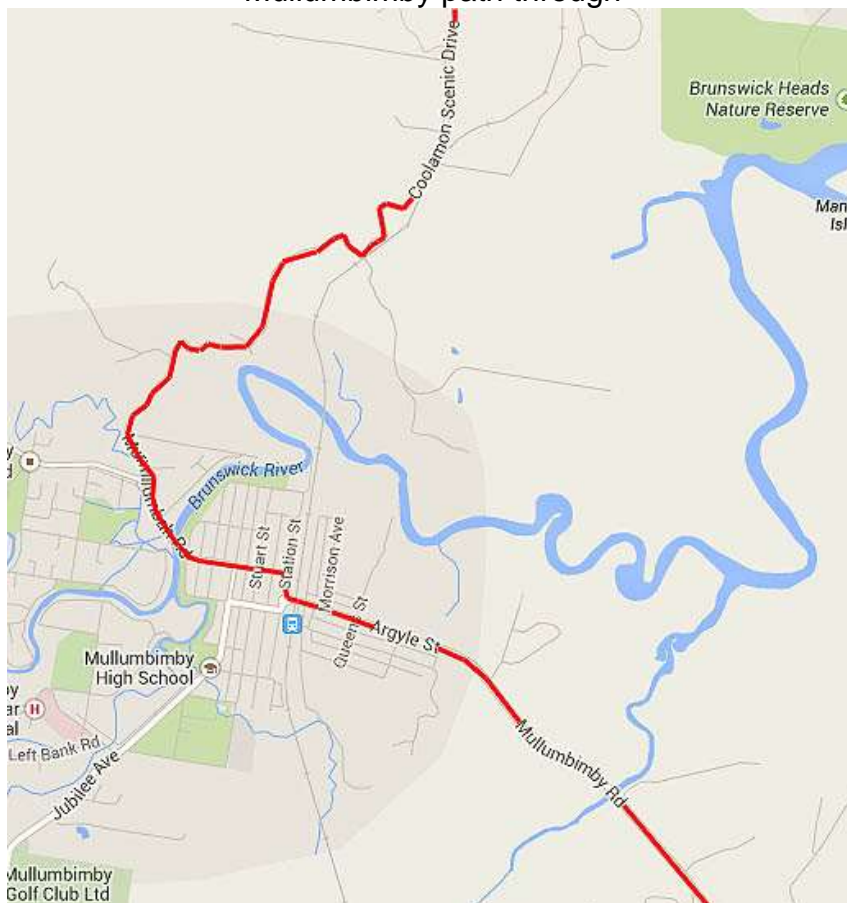
History :  
14/9/14 - 2014 Touring Run, 21 cars ( Pontiacs), 41 for lunch

Maps :

General Map of Loop



Mullumbimby path through



Photos :



Mudgeeraba Shell



Mooball opposite side parking



Billinudgel Pub (on left)



Billinudgel Pub outdoor shed at back