

PONTIAC CAR CLUB QUEENSLAND

TOURING RUN PROFILE No.5

REDLANDS

This is a half day run of short distance, suited to Brisbane or Gold Coast members.

Start Point : BP Yatala

Sector distances and times :	km	min
BP Yatala to Sirromet Winery	25	30
Sirromet Winery to Redland Bay Hotel	20	30

Route : Depart BP, turn left onto Henry Hester Drive, turn right at roundabout and head under M1. Turn right at roundabout and enter Highway, heading north. Stay in 3rd lane and exit at Exit 30, Beenleigh to Redland Bay Road. MERGE TO RIGHT SIDE OF OFF-RAMP. Turn right at lights at bottom of off-ramp, head under Highway. Head straight through next roundabout, then straight (veer right) at the next one. Continue east to Mount Cotton Road, about 4km.

Turn left at Mount Cotton Road and continue north to Sirromet Winery. Drive along entry road, over one (high) speed bump, then turn right (across double white lines) down side road to Cellar Door. Continue to triangular junction, head left into delivery area at Cellar Door. This is the main parking area.

Morning tea is \$10.50 per head, wine tasting at \$5. At some stage, we will drive 1km down to Laguna scenic outlook. Watch for skippy and his mates.

Depart Winery, turn left onto Mount Cotton Road. Head south for around 5 minutes, until you reach the lights at Valley Way. TURN LEFT DOWN ACCESS ROAD BEFORE YOU REACH LIGHTS. Follow east (becomes German Church Road) to Cleveland - Redland Bay Road intersection (lights). Continue through lights and down to T junction at Gordon Road. Turn right and follow as loops to the north into the Redland Bay shopping area. Hotel will be on the right. Turn right at Stradbroke Street and enter paddock.

Cautions : Speed-bump entering Sirromet requires caution. Redland Bay markets are on the second Sunday of each month, resulting in the paddock area not being available.

Timetable :

BP Yatala 0830 for 0900

Sirromet 0930-1130 (previously Mt Cotton Rainforest Gardens, now closed)

Redland Bay Hotel 1200

Food :

Morning Tea at Sirromet Winery Cellar Door (07 3206 2999)

Lunch at Redland Bay Hotel (07 3206 7231). Numbers required, book for 12 Noon

History :

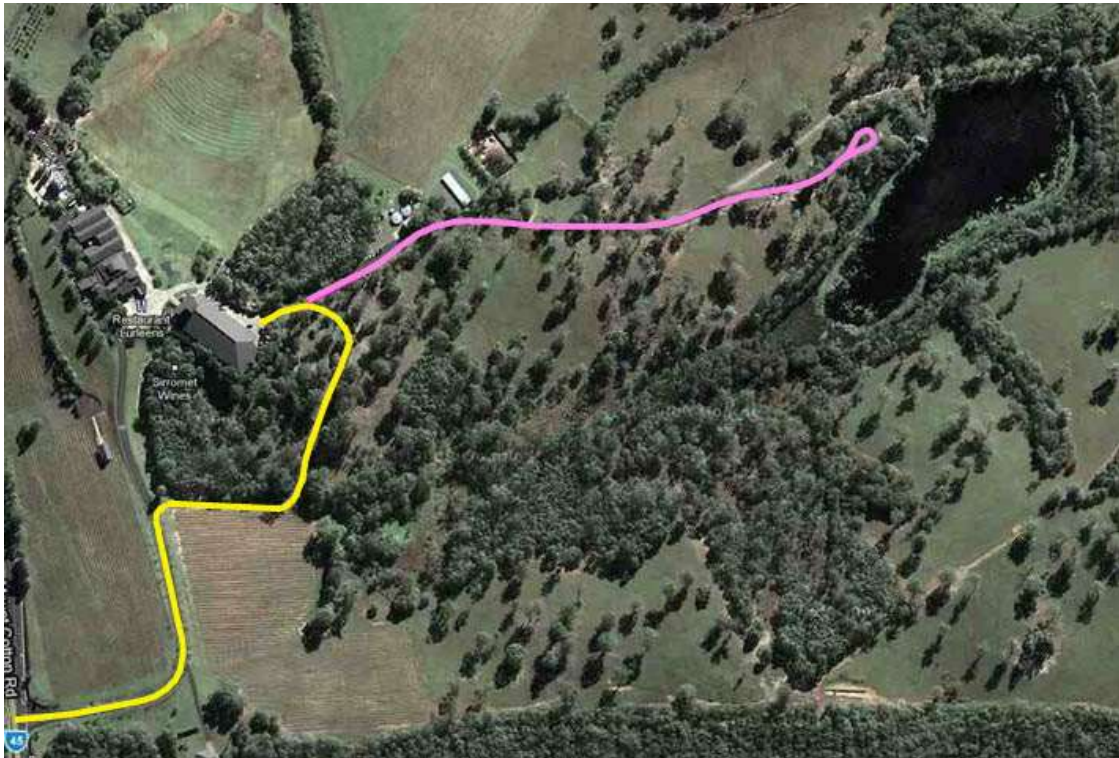
19/10/08 - 2008 Touring Run M/T at MCRG, 17 cars (9 Pontiacs), 35 participants

19/7/09 - 2009 Touring Run M/T at MCRG, 8 cars (7 Pontiacs), 12 participants

18/7/10 - 2010 Touring Run M/T Sirromet, 20 cars (13 Pontiacs), 45 participants

4/8/13 - 2013 Touring Run M/T Sirromet, 16 cars (14 Pontiacs), 25 participants

Maps :



Sirromet route to cellar door carpark, side trip to Laguna area

Photos :



Sirromet down side of cellar door



View from same spot, turned to lawn area



Laguna area



RB Hotel paddock